

### THE TWI WELD GAUGE



An essential tool for rapidly checking the dimensions of weld preparations, butt welds and fillet welds:

- \* Angle of preparation
- \* Misalignment
- \* Fillet weld leg length/excess weld metal
- \* Fillet weld throat
- \* Undercut

*When participating the CSWIP 3.0 or CSWIP 3.1 Welding Inspection Course you will receive one for free!\**

This tough, easy-to-use gauge is made from stainless steel throughout and finished to a high standard. Its parallax-free scales are conveniently graduated in metric and imperial units.

Ideal for general fabrication work in the shop or on-site, it helps you achieve the correct weld profile, reduce the risk of product failures, increase productivity and prevent materials wastage.

Supplied complete with protective wallet and illustrated instruction card.

#### Welding Gauge Data

- Overall dimensions when closed: 100 x 68mm approximately;
- Misalignment, fillet weld leg length, excess weld metal scale: 0-25mm, 1mm divisions (also 0-1 inch, 1/16 inch divisions);
- Angle of preparation scale: 0-60°, 5° divisions;
- Fillet weld throat scale: 0-20mm, 1mm divisions (also 0-3/4 inch, 1/16 inch divisions);
- Undercut scale: 0-4mm, 1mm divisions (also 0-3/16 inch, 1/16 inch divisions).

#### Please note that:

The Welding Gauge is intended for general dimensional inspection of welded fabrications where close tolerances are not expected. It should not be compared in precision with gauges used for measuring machined components and, where a high degree of accuracy is required, machine shop type measuring instruments will need to be used.

\* This TWI Weld Gauge will only be given for FREE by DT-Welding Weldconsultancy BV to every student who applied and paid for either

- CSWIP 3.0 Visual Welding Inspection Level 1 Course or
- CSWIP 3.1 Welding Inspector Level 2 Course

**PRICE**

€ 80,- Excl. VAT



### BRIDGE CAM GAUGE CAT#4

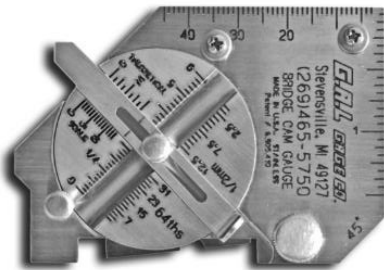


The following measurements are possible in either inches or millimeters: Angle of Preparation, Excess Weld Metal, Depth of Undercut, Depth of Pitting, Weld Throat Size, and more.

**PRICE**

€ 165,- Excl. VAT

### POCKET BRIDGE CAM GAUGE CAT#4a

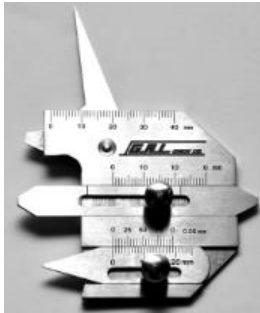


Check Angle of Preparation, Excess Weld Metal, Depth of Undercut, Depth of Pitting, and more.

**PRICE**

€ 185,- Excl. VAT

### MULTI PURPOSE WELDING GAUGE CAT#31 Metric

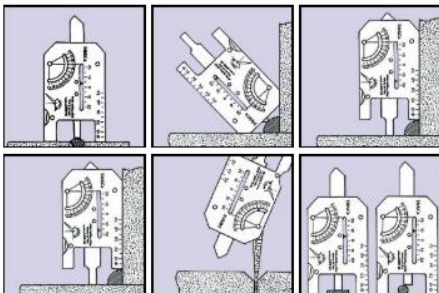


Butt Weld Height • Weld Leg • Weld Throat • Width of Weld Seam  
 • Bevel Angle • Under Cut • Gap Size

**PRICE**

€ 85,- Excl. VAT

### COMBO WELDING GAUGE CAT#20 Metric



The Combo-Welding Gauge can measure in Inch or Metric all of the following:

- ROOT SIZE • FILLET WELD LEG
- BUTT WELD HEIGHT • FILLET WELD THROAT • ANGLE OF PREPARATION

**PRICE**

€ 138,- Excl. VAT



### LINEAR ANGULAR MEASUREMENT (LAM) GAUGE



The LAM gauge has been designed specifically for measuring depth and angle for remedial weld grinding. Developed by a commercial diver-inspector in conjunction with TWI, the LAM gauge is invaluable for both underwater and topside use.

It provides linear measurements up to 40mm deep and angular measurements of up to 65°.

The LAM gauge comes complete with an easy-to-follow instructions leaflet, cosine conversion tables for flat and curved surfaces, pictorial diagrams showing other uses, carrying pouch for use by divers & topside inspectors and a heavy-duty protective plastic case for ease of storage/transportation.

Although designed specifically for taking grinding measurements, the LAM gauge is a versatile, multi-purpose instrument capable of providing many frequently needed measurements. These include:

- Welding grinding depth and angle
- Pitting depth
- Angle of preparation
- Misalignment
- Fillet weld leg length
- Fillet weld throat
- Excess weld metal
- Undercut
- Indentations
- Protrusions
- Profile of damaged areas in members (using a steel straight edge)
- Checking excavation depth in weld repairs
- Linear measurement parallel to member surface, e.g. root gap
- Measurements can be taken from flat or curved surfaces

**Please note:**

- The LAM gauge is intended for general dimensional inspection of welded fabrications where close tolerances are not expected. It should not be compared in precision with gauges used for measuring machined components. Where a high degree of accuracy is required, machine shop type measuring instruments will need to be used.

**PRICE**

€ Excl. VAT (Out of stock)



Form no. : F-77E

Prepared by : DT-Welding Weldconsultancy Revision : 4

Date : 18-05-2016

Page : 4 / 12

### ADJUSTABLE FILLET GAUGE



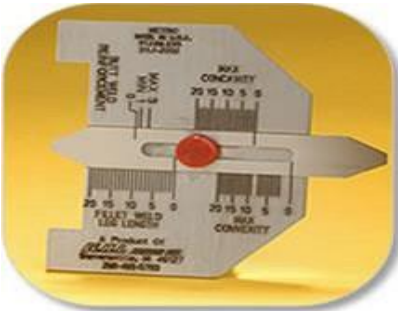
Unequal Leg Measurement Feature used to:

- Measure fillet welds by placing irregular curve edge flush to horizontal toe of weld so the straight edge is in line with the horizontal member
- Measure weld throat thickness by placing the 45° angle end flush to the horizontal and vertical members. Loosen the thumb screw and slide the pointer until it touches the face of the weld

**PRICE**

€ 115,- Excl. VAT

### AWS GAUGE



For Accurate Calibration of Butt and Fillet Type Welds used to:

- Check reinforcement
- Check the throat of fillet weld
- Determine the leg size of the fillet weld

**PRICE**

€ 45,- Excl. VAT

### FILLET WELD GAUGE



Used to:

- Check fillet throat size
- Check fillet leg size

**PRICE**

€ 45,- Excl. VAT

### SINGLE PURPOSE HI-LO GAUGE



Used for:

- Root weld space
- Eliminating rejects, improves productivity
- Internal misalignment

**PRICE**

€ 55,- Excl. VAT



Form no. : F-77E

Prepared by : DT-Welding Weldconsultancy Revision : 4

Date : 18-05-2016 Page : 5 / 12

### V-WAC GAUGE



Used to:

- Check undercut
- Check crown height
- Check porosity
- Check pits
- All stainless steel

**PRICE**

€ 35,00 Excl. VAT

### PIT DEPTH GAUGE



Undercuts/Pits to 1/2 Inch by 1/32 Inch Increments. Check Undercuts/Pits, Porosity, All Stainless Steel.

**PRICE**

€ 85,00 Excl. VAT

### WTPS GAUGE



WTPS gauge is precision made from stainless steel. All markings and dimensions are laser engraved for ease and clarity when reading.

Undercut shall be no more than 0.10in. (0.25mm) deep when the weld is traverse to the primary stress in the part that is undercut Gauge set comes with a precision ground calibration block. Each block has been surface ground to 0.0005 tolerance for exceptional accuracy

**PRICE**

€ 95,- Excl. VAT

### PIPE PIT GAUGE



- Range is 0 to 1/2" in 1/64 & 0.020 increments.
- Arm can be locked in place at any dimension
- All stainless steel
- Handy formulas on front and decimal equivalents on back of gauge

**PRICE**

€ 140,- Excl. VAT



### TAPER GAUGE - SUB 28A



Double sided Metric and Imperial measurements used to:

- Check plate fit-up
- Check flange fit-up

Highest quality possible and Double Side useable, in mm and Inches  
(1-15mm)

**PRICE**

€ 65,- Excl. VAT

### TAPER GAUGE



Single sided Metric measurements used to:

- Check plate fit-up
- Check flange fit-up

Highest quality possible and Double Side useable, in mm and Inches  
(1-15mm)

**PRICE**

€ 25,- Excl. VAT

### TAPER GAUGE – 269-465-5750



Double sided Metric and Imperial measurements used to:

- Check plate fit-up
- Check flange fit-up

Highest quality possible and Double Side useable, in mm and Inches  
(15 to 30mm)

**PRICE**

€ 75,- Excl. VAT



## RULER



Ruler 0 to 30cm.

**PRICE**

€ 9,- Excl. VAT

## FEELER GAUGE



-

**PRICE**

€ 9,- Excl. VAT

## ELECTRONIC CALIPER CAT# SP130-258-8

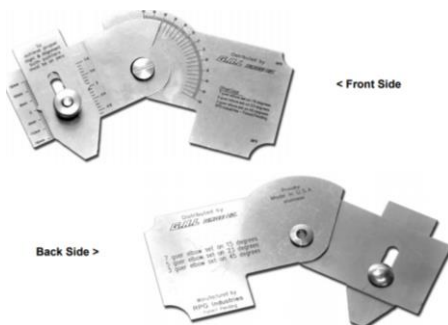


An economical 6 inch (150mm) Electronic Caliper for general use. Specifications: Range: 0-6", Resolution: 0.0005", Accuracy: +/- .002", D.O.T. Regulated

**PRICE**

€ 45,- Excl. VAT

## OFF-SET GAUGE – CAT#32



This gauge can be used to measure the offset between two plates over welds, fit-up bars, landing rings or any other object up to and including 1" that might obstruct quick measuring of two plates where the Bridgcam Gauge fails.

It can also be used to measure offset of plates in gored elbows, as seen frequently in duct work, for fit-up including the angle of the parts

**PRICE**

€ 145,- Excl. VAT



## DIGITAL WELDING GAUGE – CAT#18

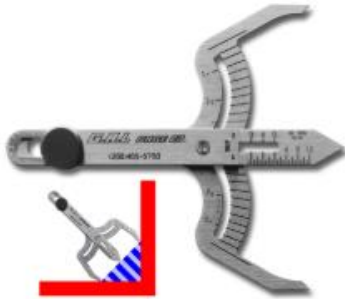


- X-Large LCD display
- Reading: Inch, Metric, Inch Fractional
- 4 Angle display on body: 60°, 70°, 80°, 90°
- Battery: 3V CR2032 (included)
- Measuring Range: 0-1.25"
- Accuracy: 0.001"
- Resolution: 0.0005", 0.01mm, 128th.

**PRICE**

€ 120,- Excl. VAT

## WELD PROFILE GAUGE – CAT#29



Quickly & easily check your welds for proper profile.

Only 3.5" long by 1.5" wide when collapsed.

**PRICE**

€ 60,- Excl. VAT

## FILLETWELD GAUGE



Measuring of fillet weld sizes

**PRICE**

€ 30,- Excl. VAT





Form no. : F-77E

Prepared by : DT-Welding Weldconsultancy Revision : 4

Date : 18-05-2016 Page : 9 / 12

### SKEW-T FILLET WELD GAUGE



Used to:

- Check acute side
- Check obtuse side
- Check angle of vertical member

Complete with Calculator

A handy compilation of Mathematical relationships between Leg length, Throats, Skew angles and Inspection Dimensions

A must for designers and inspectors.

The perfect companion to the Skew-T fillet weld gauge.



**PRICE**

€ 160,- Excl. VAT

### GASFLOW METER



- 0 to 20 Ltr./min

**PRICE**

€ 10,- Excl. VAT

### GASFLOW METER



- 0 to 25 Ltr./min

**PRICE**

€ 20,- Excl. VAT



### CIRCULAR TELESCOPIC INSPECTION MIRROR



- Mirror 1¼" diameter
- Extends to 18½"
- Closes down to 4½"

**PRICE**

€ 17,50 Excl. VAT

### OVAL TELESCOPIC INSPECTION MIRROR



- Mirror 1" x 2"
- Extends to 19¼"
- Closes down to 4¼"

**PRICE**

€ 17,50 Excl. VAT

### CIRCULAR INSPECTION MIRROR



- Diameter 81mm

**PRICE**

€ 25,- Excl. VAT



### PENLITE



Handiest light possible for professional or personal use.

- Light weight
- Features pocket clip
- 6 1/4" long

**PRICE**

€ 14,50 Excl. VAT

### TWI CALSTIK™



Plastic material manufacturers specify the gas temperature required for welding individual grades of material. Calstik™ is an essential tool for rapidly checking the gas temperature of a hot gas gun.

The gas temperature is measured 5mm inside the nozzle of the hot gas torch, meeting the requirements of EN 13705 and DVS guideline 2207-3.

This tough, easy-to-use device is made from stainless steel throughout and finished to a high standard. Ideal for general fabrication work in the shop or on-site, it helps you achieve the correct gas temperature, reduce the risk of product failures and increase productivity.

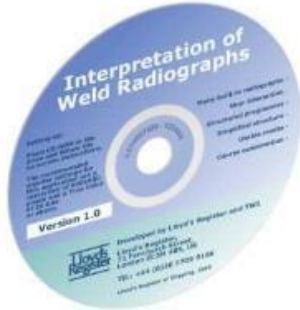
Supplied complete with hard, durable protective case and comprehensive operating instructions.

**PRICE**

€ 214,00 Excl. VAT



### INTERPRETATION OF WELD RADIOGRAPHS



#### Multimedia training system on radiography of welds and their interpretation

- Developed with Lloyd's Register of Shipping
- Features many built-in digital radiographs
- Structured training with user interaction and feedback
- One CD for unlimited training

**PRICE**

€ 712,00 Excl. VAT

### STAYING IN SHAPE



#### Multimedia training package for avoidance and correction of distortion in welding

- Guides user in practical steps to reduce distortion and actions to correct distortion after welding
- Informs personnel on the different types of distortion and when they occur
- Details factors in welding affecting distortion
- Supplies recommendations for good practice

**PRICE**

€ 564,00 excl. VAT

### BASIC METALLURGY AND WELDING



#### A comprehensive multimedia training course covering an Introduction to Welding Processes, Metallurgy in Welding, and Welding of Carbon Manganese steels

- Developed with Lloyd's Register of Shipping to train their own surveyors worldwide
- Three training courses on one CD
- Structured training with user interaction and feedback
- One CD for unlimited training

**PRICE**

€ 712,00 excl. VAT

**Please Note that all above mentioned prices are subject to change in the currency exchange market and are excluding postal costs, please contact us for prevailing price.**

